



FREMANTLE
COLLEGE



Annual Report 2023

STRENGTH RESPECT SUCCESS

www.fremantlecollege.wa.edu.au



Artwork by Ilona McGuire, Bibbulmun Noongar and Kungarakan (First Nations Australia) conceptual artist

Represented in this design are the tools used by the local Whadjuk People of Walyalup (Fremantle) region to survive, thrive and live in abundance for millennia, since the Dreaming. The wanna (women's digging stick) is a tool used for empowerment, guidance and leadership. The coolamon is a gathering and cradling tool used for nurturing and abundance. The three kylie (boomerangs) seen have specific purposes, some for fishing, hunting, fighting or music. Fremantle College's motto of strength, respect and success align with the ancient wisdom of the local Whadjuk Noongar culture that worked in a cyclical pattern with each other and the environment to ensure the strength of the people, the respect for others and the environment as well as successful lives lead by lifelong learning and curiosity. The graphic depicts the circular motion of these tools in a pattern together that centres music and ceremony at the heart, surrounded by People, moving and dancing together on country.



Message from the Principal

Dear Fremantle College Community,

Fremantle College had much to celebrate with our student academic achievements continuing to improve in 2023. In line with our commitment to academic excellence, Fremantle College has not only met but exceeded expectations, setting new benchmarks. Our students, guided by our experienced teaching staff, have demonstrated a remarkable commitment to their learning and social emotional growth.

Our Year 12 Class of 2023 have set a great example, demonstrating the college values and developing into the wonderful young adults we are proud to call our Alumni. As our first group of students who completed their full six years of secondary education at Fremantle College, we couldn't be more pleased for the students, families and our community, as we reflect on their final year.

At the heart of our accomplishments lies the embodiment of our college values that shape our college culture. These values, along with the hard work of our students, ensures that our graduates finish their secondary school journey with the knowledge and skills to confidently take up their position in society, whether it be in the workplace or through further study.

Our extensive extra-curricular activities ensure that our students have an opportunity to demonstrate our College Values of Leadership, Curiosity, Kindness, Enthusiasm for Learning and Perseverance. These activities, such as; camps, career taster days, interschool carnivals and reward excursions, ensure our students have the opportunity to find pathways which motivate them, ultimately leading to success beyond school life and facilitating friendship groups and relationship building skills. We look forward to welcoming our Alumni back to the college to share their stories and experiences.

Our continued success and positive reputation in the community has once again resulted in an increase in our percentage of local intake numbers for Year 7. The community's faith in Fremantle College to educate our leaders of the future is always appreciated and our staff continue to take their position of educating these young minds with enthusiasm, ensuring the success of Fremantle College for future generations.

A key strength of Fremantle College is that we are always innovating and changing to ensure that we can make our college the best it can be. I trust you will enjoy sharing in the accomplishments of our collective efforts throughout the pages of our 2023 Annual Report.

Myles Draper, Principal

College Board 2023

The College Board is formed to provide a formal means of achieving community participation in schools to ensure they are responsive to local needs. The Fremantle College Board is made up of representatives from staff, parents and the wider community, and meet each term.

2023 College Board Members:

Myles Draper – Principal	Emma Herrick	Annie Bertolini (Wellbeing Captain)
David Raftery – Co-Chair	Jon Cope	Nuk Sriphuwiang (Arts Captain)
Dominique Hansen - Co-Chair	Erin Baker	Joshlyn Sta-Ana (Academic Captain)
Pamela Lewis	Christopher Walke	Ami Pitman-Wright (Sports Captain)
Judith Lichtenzveig (P&C Member)	Sarah Hopley	Nathan Dines, Katherine Shea and Samantha Murray joined late 2023
Catherine Turnbull		

From the Board Co-Chairs

Dear Fremantle College Community,

This year marked a major milestone for Fremantle College. Our School Principal Myles Draper and his team accepted the College's first intake of Year 7 students in 2018. This first cohort graduated in 2023. The moving and uplifting graduation ceremony showcased the talents, motivation and values of our staff and students, who together, have shaped the culture and success of our school.

The college recorded a median ATAR score of 85, and 97% of students achieved their WACE in 2023. 93% of our students have secured pathways to tertiary education or employment through either the college's academic, vocational education and training or VocLinks pathways.

The Board thanks Fremantle College staff for their hard work in building, and implementing an educational program that caters for all students, and which is constantly reviewed and improved. The school's success reflects the College's vision of being a vibrant and inclusive learning community where all students are supported, and where pathways for all students to succeed and grow are available. We also recognise the vital role played by the Parents and Citizen's Committee as well as our Board colleagues in supporting the school.

The Board's role is to assist the College in its commitment to pursue success for all students. This role includes continuing to foster relationships with local businesses, community organisations and universities – all of whom are increasingly embracing the skills and values that Fremantle College students are bringing to the wider community.

Fremantle College continues to grow with 1390 students enrolled for 2024. The College's infrastructure requires investment to continue to support the success of our growing student body.

We were pleased to host a tour of the school in August 2023 for The Hon. Dr Antonio De Paulo Buti MLA; Minister for Education, Aboriginal Affairs; Citizenship and Multicultural Interests, and our local member The Hon. Simone Frances McGurk MLA Minister for Training; Water and Youth. This visit provided an invaluable opportunity to emphasise the diverse learning opportunities that the College provides.

A key Board focus for 2024 will be to obtain government funding and support for the College's infrastructure priorities, so that the College can continue to enact its commitment to provide engaging educational pathways for all its students.

A number of Board member appointments concluded in 2023. We would like to thank the four student captains: Annie Bertolini, Joshlyn Sta-Ana, Nuk Sriphuwiang and Ami Pitman-Wright; parent representatives Jon Cope, Allison Loo and Michael Pitt; and P&C representative and community member, Dr Judith Lichtenzveig for their valuable contributions to the College Board.

We look forward to working with staff, students, parents and our community supporters to build on Fremantle College's success in 2024.

David Raftery and Dominique Hansen





Our Vision

We are a vibrant and inclusive learning community, providing high-quality education, in both academic excellence and the well-being of students.

We encourage our students to grow and develop to their fullest potential in a caring and friendly environment that celebrates diversity and fosters inclusion. By emphasizing the importance of our college values, we inspire our students to think critically, embrace diverse perspectives, and develop the skills and knowledge to engage with the world in meaningful ways.

Our Motto

STRENGTH RESPECT SUCCESS

Strength

A strong character is an essential component of personal growth and development, as it provides the foundation for building positive relationships, making ethical decisions, and contributing to society in a meaningful way.

Respect

Respect is a fundamental value that involves treating others with dignity, consideration, and appreciation. It involves recognizing the inherent worth and value of all individuals, regardless of their background, culture, or beliefs.

Success

Ultimately, success is a personal journey that involves setting and achieving meaningful goals, being true to oneself, and making a positive impact on others and the world around us.

Our Values

PERSEVERANCE : We believe that resilience and persistence are important skills for dealing with challenges in both life and learning.

LEADERSHIP: We believe all people have the capacity to lead others and themselves in positive ways to achieve their best.

CURIOSITY: We encourage curious learners, who ask questions, explore, inquire and seek further knowledge about the world.

KINDNESS: We value all people in our college community; this means treating each other with empathy and care, and fostering positive emotions.

ENTHUSIASM FOR LEARNING: We encourage a love of learning for life, approach every learning situation with enthusiasm and try to master new skills and knowledge in different situations.



Building strong independant thinkers

Success for All Students 2023... A Year of Highlights



Fremantle College Art, Media Art and Design and Technology Exhibition



Mathematics - Maths Talent Quest High Distinction Recipients



Mock Trials Team



Act Belong Commit - Emerging Talent Winner - Siena Rebelo



Specialist Contemporary Music - Galactic Extravaganza consisting of Fremantle College student mentors and Primary School IMSS Students



Inaugural Surf Team



Sailing Team



College Athletics Carnival



Minister Buti Visit

“Success is Not Final, Failure is Not Fatal: it is the Courage to Continue that Counts” ... Winston Churchill



Year 10 Specialist Marine Students
PADI Scuba Dive Tickets



AFL Academy Awards Night



Career Taster Days



Year 12 Presentation Evening



Emmanuel Miller - Trainee of the Year
Finalist



Gifted and Talented and Specialist ICT
Canberra and Sydney Trip



Medieval Day



Student Leaders Representing at Zero
To Hero Conference



Lunchtime Gigs in the Calvert Music
Centre
Fremantle College Annual Report

Success for All Students 2023... A Year of Highlights



Interschool Athletics



OPUS Music Concert



Specialist ICT Robotics



Debating Team - MVP Award



Volleyball Schools Cup Success



Friends of Cantonment Hill Volunteer
Work



Year 10 Specialist Marine Students
Skippers Ticket achieved by 100% of
cohort



Drama Showcases



Year 10 Specialist Marine Studies
Coral Bay Camp

Success for All Students

Year 12 Performance

Priority
Area

The overall performance of Year 12 students in 2023 was extraordinary. As the inaugural Year 7 Fremantle College cohort, their results reflect the consolidation of quality teaching and learning, as well as whole school wrap around support. Students performed well in all three pathways, ATAR, VET and General.

Fremantle College saw a 39% increase of student participation in the ATAR pathway. The Median ATAR of 85 was the highest recorded in the college's history and a 15-point increase from 2022.

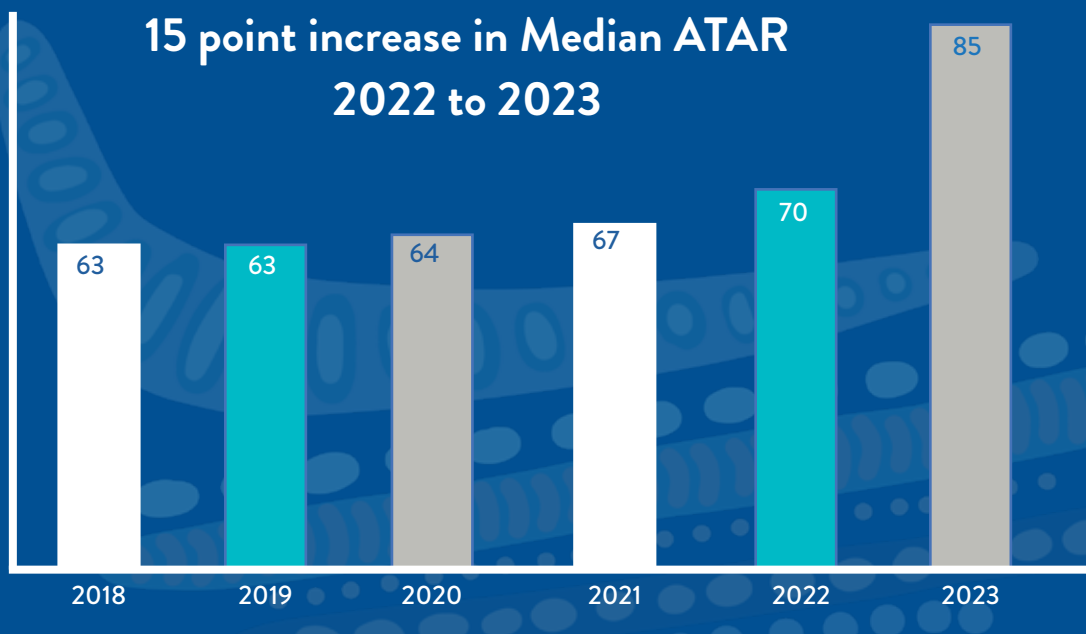
A record number of Certificates of Distinction and Certificates of Merit were awarded, which recognise student achievement in the Western Australian Certificate of Education (WACE), based on the degree of difficulty of the courses undertaken, as well as the student's level of achievement. Remarkably, 97% of all Year 12 students achieved their WACE, a 14 % increase since the schools inception and 5% above like schools. Students completed 108 endorsed learning programs units, which were delivered as part of the school curriculum and contribute toward the WACE, an increase of 43% from 2022. Through STEM our graduates engaged creatively in real world problems, applying their understanding of science, technology, engineering and mathematics in integrated and innovative ways. Fremantle College saw a 223% increase in students studying in 2 STEM courses in Year 11 and 12 since 2019.

Implementation of the Fremantle College Teaching and Learning Framework as well as rigorous academic counselling, high care of students and interrogation of data continues to ensure students maximise their results and achieve success at Fremantle College.



85
MEDIAN ATAR
in 2023

15 point increase in Median ATAR 2022 to 2023

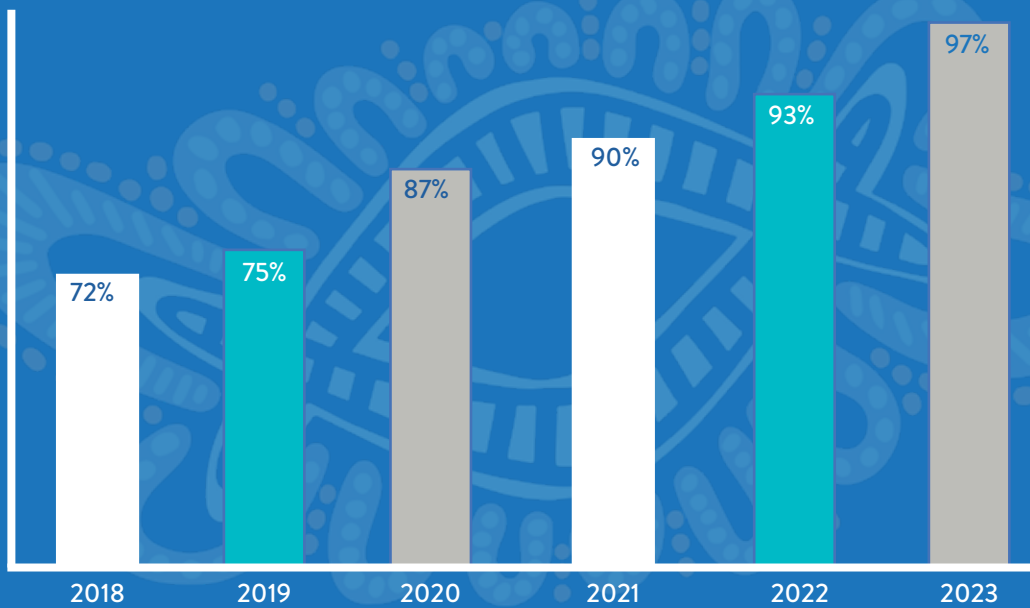


Success for All Students

Year 12 Performance

Priority
Area

WACE ACHIEVEMENT RATE BY YEAR



2023 WACE ACHIEVEMENT RATE



35%
INCREASE
IN YEAR 12
STUDENT
WACE
ACHIEVEMENT
OVER
6 YEARS

223%
INCREASE
IN STUDENTS
STUDYING 2 STEM
COURSES IN
YEAR 11 AND 12
SINCE 2019



ATAR Tricicles - High/Mid/Low

ATAR Tricicles	2023	2022	2021	2020	2019	2018
High	30%	24%	13%	11%	8%	12%
Medium	34%	18%	13%	18%	15%	19%
Low	36%	59%	74%	71%	77%	65%

ATAR Performance

ATAR Scores	2023	2022	2021	2020	2019	2018
90 - 99+	30%	24%	13%	11%	8%	8%
80 - 89.95	27%	6%	9%	4%	8%	12%
70 - 79.95	18%	24%	26%	21%	19%	12%
55 - 69.95	16%	29%	30%	32%	38%	38%
<55	9%	18%	22%	32%	27%	27%

Australians all let us rejoice,
For we are one and free;
We've golden soil and wealth for toil;
Our home is girt by sea;
Our land abounds in nature's gifts
Of beauty rich and rare;
In history's page, let every stage
Advance Australia Fair.
In joyful strains then let us sing,
Advance Australia Fair.

Beneath our radiant Southern Cross
We'll toil with hearts and hands;
To make this Commonwealth of ours
Renowned of all the lands;
For those who've come across the seas
We've boundless plains to share;
With courage let us all combine
To Advance Australia Fair,
In joyful strains then let us sing,
Advance Australia Fair.



Year 12 Award Winners

DUX - Academic	Anna Isaac
DUX - VET	Zahara Dunkley-Mtonga
Caltex All Rounder Award	Clarke Graham
Long Tan Award	Jorjah Brown
Future Pathways Award	Alexandra Waldock
Sports Star Award	Ashleigh Martinez
Arts Award	Neala Thomas
Aboriginal Leadership Award	Emmanuel Miller
STEM Award	Dhanalakshmi Madhan Sangeetha
Future Innovators Award	Jonah Hemara
Kindness Award	Clarke Graham
Perseverance Award	Maisie Morris and Harvey Templeton
Leadership Award	Nuk Sriphuwiang
IMSS Music Award	Siena Rebelo



SCSA Awards Certificate of Distinction Recipients:

Anna Isaac
Dhanalakshmi Madhan Sangeetha

Certificate of Merit Recipients:

Emma Atkinson
Sarah Atkinson
Frances Maya Beltran
Anja Bosanac
Clarke Graham
Sollya Grein
Jonah Hemara
Joshlyn Sta Ana
Acacia Wharton

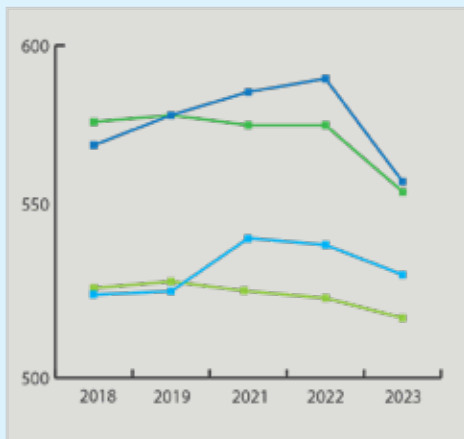
Success for All Students NAPLAN

Priority
Area

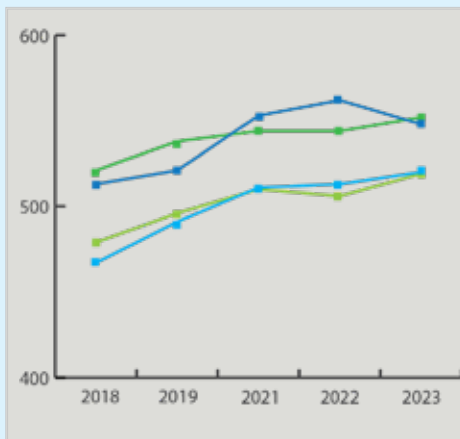
NAPLAN tests are written based on the Australian Curriculum and designed to allow students to demonstrate their skills and knowledge in literacy and numeracy. Teachers in Maths and English are instrumental in value adding to NAPLAN results. They do this by ensuring that teaching and learning programs are differentiated to allow students to succeed and that the Western Australian Curriculum is being taught in all classrooms. This allows students to demonstrate their skills and knowledge in literacy and numeracy. In both English and Maths, the continuous building of skills is vital in improving student results. This allows student to be confident in their learning. As areas of strength or improvement are identified teachers are able to target areas of improvement to help students gain in skill and confidence. Both learning areas also develop rigorous assessments based on the Judging Standards and teachers' moderate assessments to ensure that they have an in depth understanding of what the student is being asked to do. This ongoing work and targeted intervention is demonstrated in the improvement of students NAPLAN results from Years 7 to 9 at Fremantle College, and consistently above 'Like Schools'.

NAPLAN RESULTS 2018 to 2023 Year 7 and Year 9 Comparative to 'Like Schools'

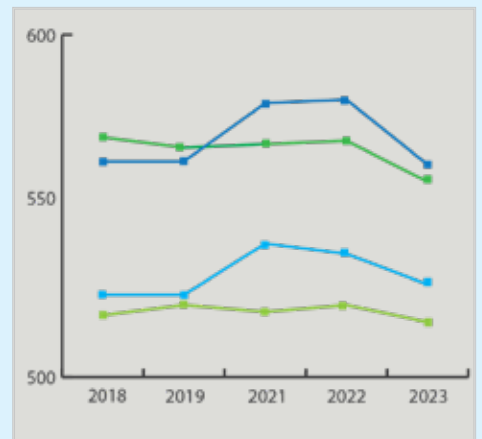
Numeracy



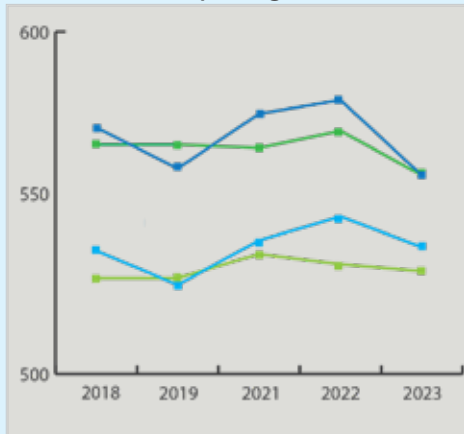
Writing



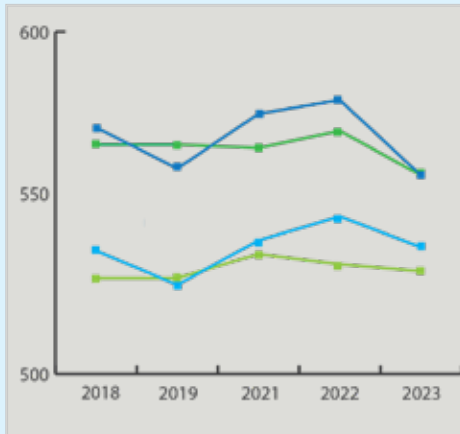
Reading



Spelling



Grammar & Punctuation



- Fremantle College Year 7
- 'Like Schools' Year 7
- Fremantle College Year 9
- 'Like Schools' Year 9



A range of programs, such as Pathways, Macq Lit, student conferencing, OLNA classes and OLNA WA are embedded at Fremantle College to support students and their successful achievement of the Online Literacy and Numeracy Assessment (OLNA), a requirement for the Western Australian Certificate of Education (WACE). In 2023, 97% of all year 12 students achieved their OLNA. The number of students who demonstrated the required standard of Literacy and Numeracy for the WACE continues to exceed that of our Like Schools.

PERCENTAGE OF FREMANTLE COLLEGE STUDENTS WHO MET THE OLNA STANDARD AT THE COMPLETION OF THEIR YEAR 12 STUDIES

OLNA Testing	2023	2022	2021	2020	2019	2018
Reading	100%	97%	97%	96%	91%	95%
Writing	99%	97%	95%	96%	86%	95%
Numeracy	98%	97%	95%	90%	94%	84%

“The most certain way to succeed is always to try just one more time” ... Thomas Edison

Success for All Students OLNA

Priority
Area

PERCENTAGE OF STUDENTS QUALIFIED OLNA BY YEAR GROUP IN YEAR COMPARATIVE TO 'LIKE SCHOOLS' - AS AT OCTOBER 2023 ROUND OF TESTING

YEAR 9	Fremantle College	'Like Schools'
Percentage of Students Qualified	24.5%	18.4%

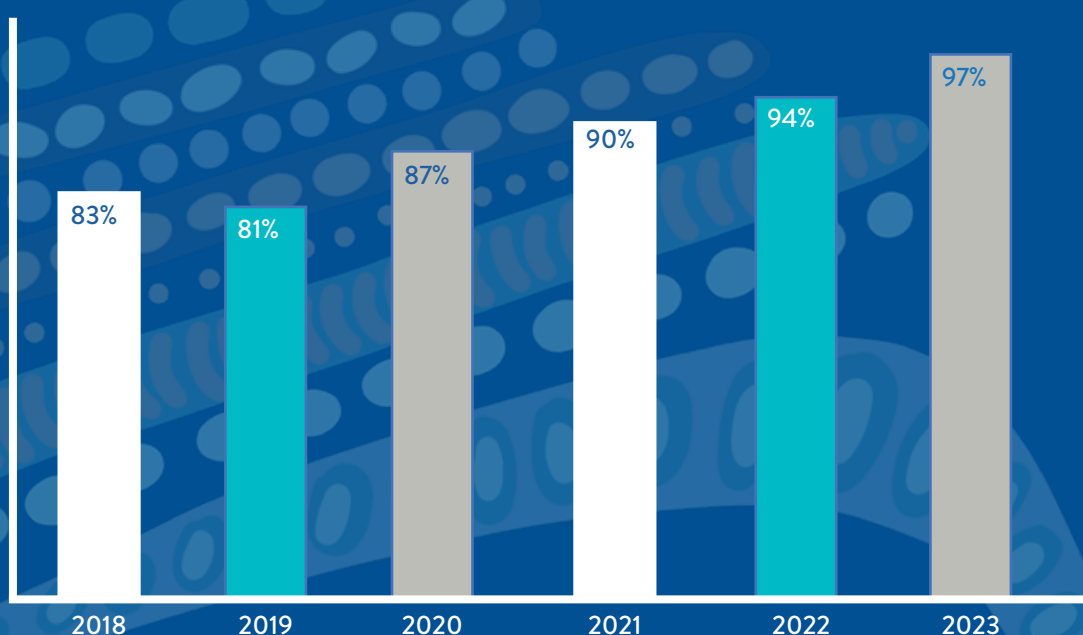
YEAR 10	Fremantle College	'Like Schools'
Percentage of Students Qualified	37.3%	36.5%

YEAR 11	Fremantle College	'Like Schools'
Percentage of Students Qualified	13.9%	14.9%

YEAR 12	Fremantle College	'Like Schools'
Percentage of Students Qualified	7%	6.1%

OLNA ACHIEVEMENT RATES

97%
OF STUDENTS
IN YEAR 12
ACHIEVED
THEIR
OLNA IN
2023



PERCENTAGE OF STUDENTS WHO
ACHIEVED OLNA BY YEAR 12

Success for All Students

Vocational Education and Training

Vocational Education and Training (VET) in schools enables students to achieve a national vocational qualification under the Australian Qualifications Framework whilst completing their WACE achievement. VET is taken as part of the Western Australian Certificate of Education and completion by the student provides a wide range of post school options and pathways. Fremantle College offered or facilitated the Certificate Courses below for our Year 12 cohort.

Certificates Studied at Fremantle College	Percentage of students achieved Certificate
Certificate II Hospitality	100%
Certificate II Outdoor Recreation	100%
Certificate II Engineering Pathways	100%
Certificate II Community Services	100%
Certificate II Music Industry	100%
Certificate II Active Volunteering	90%
School Based Traineeships	
Certificate II Retail Services	100%
Certificate II Workplace Skills	100%
Certificate III Horticulture	100%
Certificate II Conservation and Ecosystem Management	100%
Certificate II Community Services	100%



Indy Morton
AllBlitz Plumbing



Daenah Blackley
Stantec

Success for All Students

Vocational Education and Training

Certificates Studied as VET in Schools Profile and Fee for Service	
Certificate II Integrated Studies	100%
Certificate II Building and Construction	100%
Certificate II Horticulture	100%
Certificate II Community Services	100%
Certificate II Engineering	100%
Certificate II Civil Construction	100%
Certificate II Automotive Servicing Technology	100%
Certificate II Autonomous Workplace Operations	100%
Certificate II Autonomous Vocational Preparation	100%
Certificate II Retail Services	100%
Certificate II Kitchen Operations	100%
Certificate II Plumbing (Pre-Apprenticeship)	100%
Certificate II Electrotechnology	100%
Certificate III Animal Care Services	100%
Certificate III Aviation (Remote Pilot)	100%
Certificate III School Based Education Support	100%
Certificate III Community Services	100%
Certificate III Engineering Technical	100%
Certificate III Screen and Media	100%
Certificate III Events	100%
Certificate IV Preparation for Health and Nursing Preparation	100%
Certificate IV Business	100%
Certificate IV Community Services	100%



Jahkye Maher
Scavenger Fire and Safety



Georgia Brown
Phoenix Primary School



Ally Waldock
Pacific National

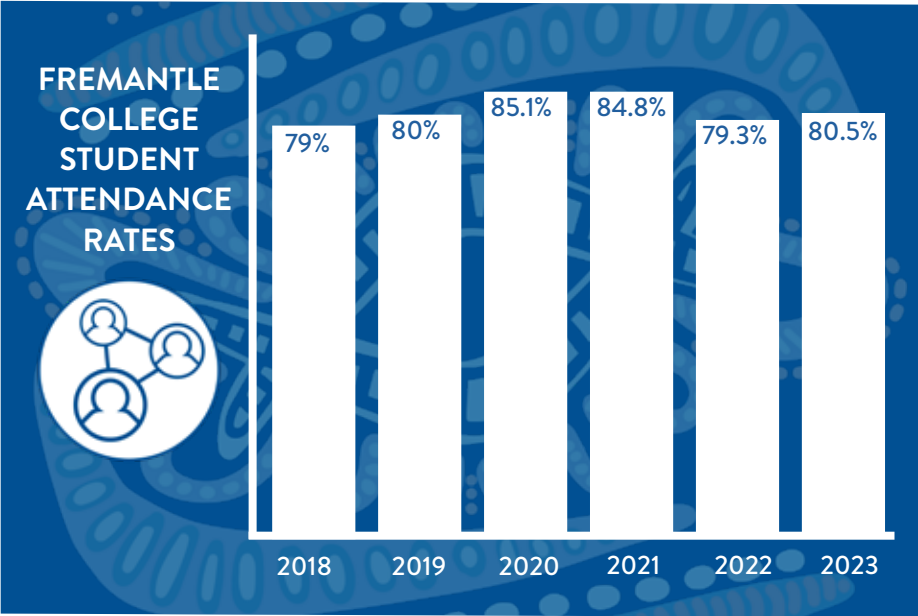
Student Services

Attendance

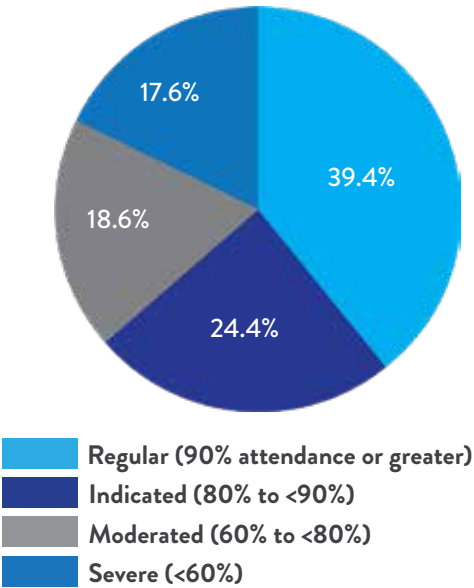
The relationship between attendance at school and engagement and achievement across all cohorts strongly suggests that every day attendance contributes highly towards a student’s learning capabilities and academic outcomes.

Building a positive college culture, promoting school attendance, monitoring absences, targeted intervention and supporting families are key elements to the gradual improvement in our attendance data thus far. The below strategies have helped with these improvements:

- Linking of our Good Standing Policy to attendance rates and reward activities.
- Improved communication with parents to reduce ‘unauthorised’ absences from college.
- Early identification of ‘at risk’ students and use of ‘live tracking’.
- Specific classes set up to re-engage students at risk.
- Targeting connectedness at the college. Introduction of positive programs, competitions, afternoon activities and rewards.
- Rigorous review of attendance processes within the college.
- Development of individualised plans for students in the moderate range.



ATTENDANCE PROFILE



Student Services

Positive Behaviour Highlights



Book Week Dress Up Day



Chaplain Lawn Activities



Harmony Day Celebrations



Push-Up Challenge



Volunteer Week Celebrations with our Student Breakfast Club Volunteers



Wear it Purple Day Celebrations



YSAFE Seminars

Student Characteristic Funding Gifted and Talented Education

Our fifth year of the Gifted and Talented Selective Academic Program has seen continued growth and expansion, with Year 7, 8, 9 and 10 groups participating. Students remain as one class set for English, Maths, HASS and Science.

Our 2023 Highlights were:

Year 9 and 10 GAT/ICT Sydney and Canberra tour

Perth Festival workshop

TedX WA Youth event

DaVinci Decathlon

UWA Race around the Campus

Solar Car Challenge

Big Science Competition

Math talent Quest

OzClo Computational Linguistics Competition

Emerging Scholars

Student leadership for GAT transition

Australian Maths Competition

Write a book in a Day

Bebaras Competition

Excursions to Fremantle Maritime Museum, WA Museum Boorla Bardip and Perth Zoo

2023 Biennale Festival

Fremantle Arts Centre workshop

Day in the life of a University student Murdoch and UWA

Year 12 High Flyers tour of Curtin University

Model UN workshop

Science and Engineering Challenge

Inspiring Australians Forum

Futures of Fremantle Forum

91%
increase in GAT
enrolments
to Fremantle
College over 3



98.5
highest GAT
Student ATAR
Score



91
median ATAR
for 2023 Year 12
GAT students

Student Characteristic Funding

Gifted and Talented Education

Achievement Snapshot



100%

of our Gifted and Talented students improved performance in abstract reasoning

Isabell Doherty, Jaxon Harris, Lucy Isaac and Nicholas Price achieved a Distinction in the Big Science Competition 2023.

Toki Aravena-Wise, Aloise Barker and Tristan Wheeler achieved a High Distinction in the Big Science Competition 2023.

Elliot O'Halloran, Oliver Iriks, Dylan Karunanayake, Oisin Mullins, Luis Palmer, Samuel Richardson achieved a Distinction in the Australian History Competition.

Aloise Barker achieved a High Distinction - Australian History Competition.

Isabella Doherty, Akira Jorgensen, Emily Cribb, Ori Hawk and Nicholas Price achieved a Distinction for the Australian Geography Competition.

Clem Hosking, Samuel Richardson, Lucy Isaac and Kezia Thebaud achieved a High Distinction - Australian Geography Competition.

Lucy Isaac achieved a Distinction in the Maths Talent Quest.

Akira Jorgensen, Oliver Iriks, Martin Santana and Dylan Karunanayake achieve High Distinctions and were entered into the National competition for the Maths Talent Quest.

Liam Mulchrone, Reinne Garcia, Dekoda Lindon and Zoe Hartmire - top scoring Fremantle College team in the OzClo competition.

Sophie Thomas and Isabella Pymm attending a camp in Adelaide as part of the 2023 Curious Minds program.

Yajat Sharma for being a member of the 2023 Ministerial Youth Advisory Council.

Student Characteristic Funding

Aboriginal Education highlights

At Fremantle College every student has the ability to succeed. We aim to prepare our students to thrive in the workforce and their journeys through life. To support this goal for our students with Aboriginal heritage, we run the Department of Education funded program Polly Farmer and Department of Education Follow the Dream (FTD). The Clontarf Academy and Waalitj Foundation's Deadly Sista Girlz are also on site at Fremantle College, offering support, leadership and guidance to our Aboriginal students.

The highlights for 2023 include:



NAIDOC Week Celebrations



Clontarf Awards Night



Clontarf Coral Coast Cup



Clontarf Workplace Visits





Follow the Dream - Worley Innovation Challenge and Camp



Acknowledgement of Country Student Group



FTD Skills West Visit



Walk for Reconciliation



Sorry Day Activities



100%
of Aboriginal
Students
achieved a VET
qualification

ALL
Aboriginal
Students
achieved
their enrolled
Traineeship



Student Characteristic Funding Specialist Learning Program (Autism)

Since its establishment in 2018, the Specialised Learning Program (Autism) at Fremantle College has been recognised as exemplary in the education and school community for the ongoing investment in and dedication to supporting autistic students to achieve success in the mainstream secondary setting. Our key objectives of improving educational and behavioural support, improving student achievement in academics, social skills, communication skills and self-regulation, improving attendance and facilitating clear pathways to post-destinations, continue to be met at a high standard across all year groups.

2023 saw some significant changes to the staffing structure of the program, as it continues to develop aspirant leaders with excellent knowledge and understanding of Autism best practice. Foundational Program Coordinator Nicola De Lacy was promoted to an Operations role within the College in July. This created an opportunity for Jack Harper to step into the role of Program Coordinator who transitioned seamlessly into the role under the mentorship of Nicola. Sophie Holmwood returned to the College to lead interventions in the senior school years, whilst Chad Freeman continued to lead the lower school and support Sophie's transition into her new role. The conclusion of 2023 saw Nicola's hard work and dedication secure her a position as a Deputy Principal at Lynwood Senior Highschool, with Jack Harper to continue his work as Program Coordinator into 2024.

With the implementation of brand new secondary SLPs opening across the Perth Metro area, Fremantle College SLP hosted a number of new program coordinators, teaching staff and education assistants beginning in the new programs. During these sessions we were able to exchange thoughts, ideas and showcase the opportunities we provide for our students to be successful in a mainstream space.

Throughout 2023, the program reached capacity and saw 18 students access specialist supports from Year 7 to 11. In 2023, students in the SLP achieved regular or improved attendance across all subjects and year groups, positive peer engagement both within and outside of the program, the ongoing development of their social and emotional regulation, highlighted through countless Values Award winners throughout the year. A substantial number of students also achieved academic merit awards for both progress and top results in courses of study in both lower and upper school pathways such as ATAR.

During 2023, the SLP continued to successfully use the adaptive behaviours assessment tool, SCERTS (Social Communication, Emotional Regulation, Transactional Supports) to assess students emotional and social regulation from Years 7 to 10. Data collected was then interpreted by specialist staff and used to create individual student goals and allow teaching staff to identify possible areas for growth for students, and cater to the specific needs of each student during scheduled classes.

SLP staff continued to provide guidance and support for families and their children to access programs, resources and networking opportunities throughout 2023. Out of the 18 places in the program a number were involved in specialist programs including Gifted and Talented, Academic Excellence, Specialist ICT, Music and Marine.

Our primary focus has always been and continues to be engaging students in their mainstream pathways whilst preparing them for post-schooling life. To support this development SLP students and families were given opportunities to partake in:

- MESH subject excursions and incursions, including GAT UWA workshops
- School-wide wellbeing initiatives, such as Harmony Day
- SLP led initiatives such as Neurodiversity Appreciation and Acceptance Day
- Networking excursions with other schools
- The Fathering Project group sessions
- Career tasters and TAFE open days
- Post-Destination parent evenings
- RSE Girls Group

Classroom participation remains high, and our two homerooms are available for access at any point during the school day to seek support for dysregulation, illness/injury, mental health and curriculum (i.e. assessments, work load management, executive functioning, study skills, etc). Students are also provided opportunities to attend excursions and incursions with students attending escape room and the WA Museum which was attended with fellow network SLP Baldivis Secondary College.

Parent and student feedback remains a key component of the program's success. Parent feedback in 2023 has enabled the implementation of the program to schedule professional learning based on Pathological Demand Avoidance and more effective parent induction processes for new families joining the program. Some key responses from families about the program are below:

"We are really grateful for our child to be in the SLP ASD program and it has made a world of difference in his attitude towards and participation in school."

"It's worked well to have therapists visit onsite and to have a case conference with all therapists. It would be even better if the staff got more training in PDA. And if parents of children who join the program after year 7 got an induction into the program."

"Couldn't be more happy with this programme! Without the help and support of the SLP ASD my son wouldn't have been able to achieve anywhere near as much as he has. Very Thankful."

Student Demographics

Fremantle College has seen considerable growth of 36% in enrolment numbers since opening in 2018. Our focus has been to continually improve enrolment numbers from our local catchment area and applications for our Gifted and Talented Program and our Specialist Programs.

Our targeted Year 5 Programs; Curiosity Club and Emerging Scholars, have continued to grow the number of Gifted and Talented and Specialist Program applications. Primary school involvement with events such as Science Week and our Music Extravaganza have continued to strengthen relationships with our Primary School network, with the overall awareness of the opportunities and facilities on offer to our local community.

This has seen an increase in local intake area enrolments from:
59% in 2018
to
78% in 2023

The introduction of Virtual College Tours, Specialist Program Tours, increased interaction with our local Primary Schools and furthering our digital presence both organically and intentionally via advertising, will continue our positive growth and build our reputation as a school of choice for the Fremantle area.

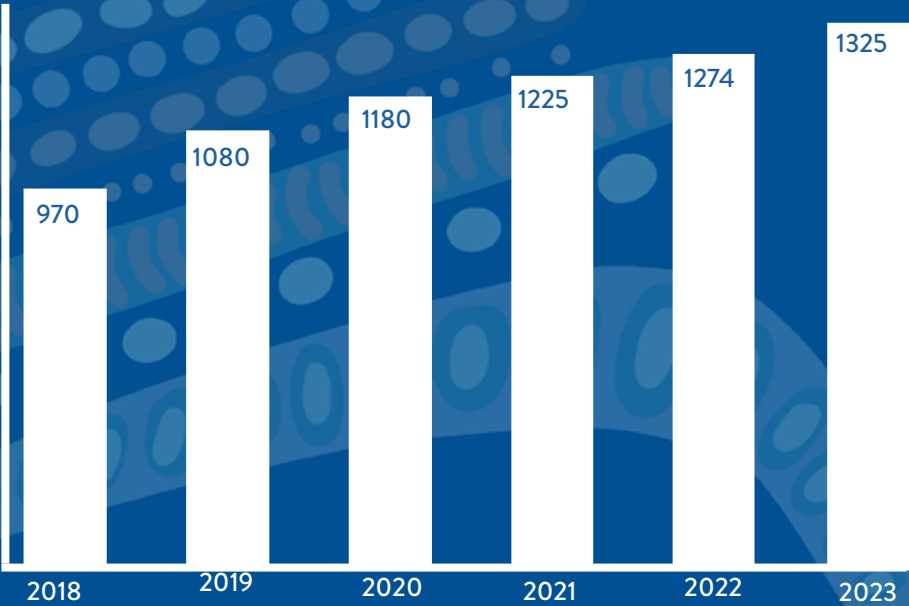
Student retention has also improved considerably since 2019. Our transiency rate in 2019 was 19%. With improved pathway alternatives; an increase in ATAR alternatives, introduction of VOC Links, introduction of Uni-Ready Pathway and Career Practitioner education within the college, our transiency rate has improved to a lower 13%.

50%
of Emerging Scholars
students applied to
Fremantle College
Gifted & Talented
Program



74%
of Curiosity Club
students applied to
a Fremantle College
Specialist Program

36%
INCREASE IN
ENROLMENTS NUMBERS
OVER 6 YEAR PERIOD



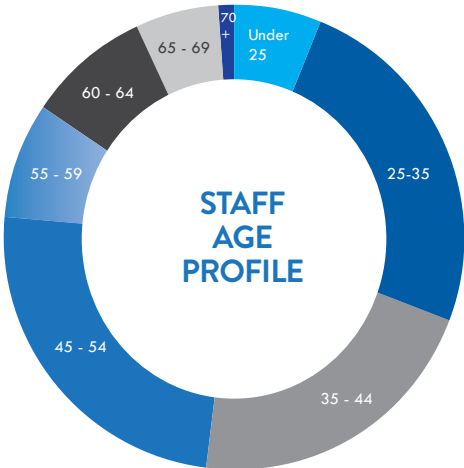
Staff Demographics

Fremantle College is committed to ensuring that all staff receive professional development in the areas that directly complement the aspirations outlined in our College Business Plan, as well as meet our targets for implementing a teaching pedagogy that enables the optimisation of student progress.

In addition, Fremantle College complies with all mandated professional development that ensures all staff understand their responsibility in meeting Department of Education policies, guidelines and regulations.

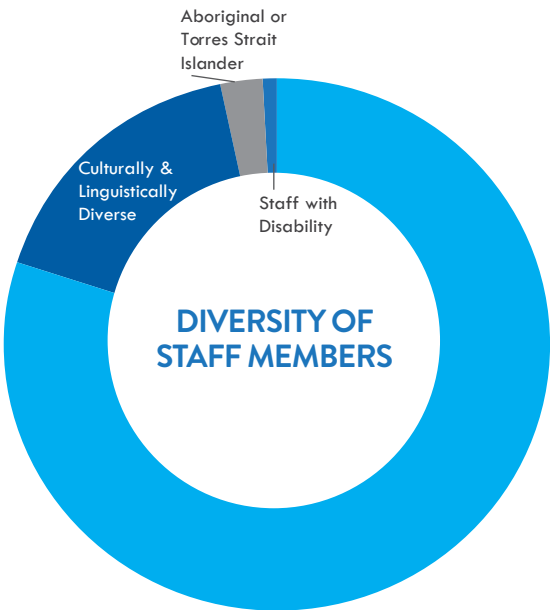
Our staffing figures for 2023 were:

Administration Staff	23
Teaching Staff	100
Allied Professionals	56



Over the six mandated School Development Days, our staff completed a number of courses based around our core focus areas of:

- Teaching and Learning Framework
- Aboriginal Cultural Standards Framework
- Positive Education
- Compass
- AVID
- GERRIC Gifted and Talented
- Leadership Development- Growth Coaching
- Future Leaders Framework
- Graduate Teacher Professional Learning



Student Centred Funding Targeted Initiatives

Targeted Initiatives are one of the components of annual Student Centred Funding provided by the Department of Education. Fremantle College receives funding for the following programs:

Targeted Initiatives	Salary	Cash	Total
Additional support for delivery of mental health programs	\$12,369.24		\$12,369.24
Follow the Dream	\$154,396.14	\$82,089.62	\$236,485.76
Gifted and Talented Education Program	\$355,111.00	\$19,100.00	\$374,211.00
Graduate Teacher Induction Prog & Graduate Curriculum Materials	\$14,917.68	\$548.62	\$15,466.30
Level 3 Classroom Teachers Additional Teacher Time	\$12,369.24		\$12,369.24
Schools With Low Proportion of Level 3 Classroom Teachers	\$12,369.24		\$12,369.24
Specialist Career Practitioners	\$123,692.43		\$123,692.43
Specialist Learning Programs for Autism Spectrum Disorder	\$401,781.00	\$77,012.50	\$478,793.50
Additional Educational Adjustment	\$27,869.03		\$27,869.03
VET delivered to secondary students	\$354,132.35		\$354,132.35
Vocational Education and Training Teachers Professional Learning	\$5,594.13		\$5,594.13
National Student Wellbeing Program	\$10,140.00		\$10,140.00
National Student Wellbeing Program	\$10,140.00		\$10,140.00
Secondary Assistance Scheme - ABSTUDY Supplement Allowance	\$790.00		\$790.00
Secondary Assistance Scheme - Clothing Allowance	\$14,030.00		\$14,030.00
Secondary Assistance Scheme - Education Program Allowance	\$54,990.00		\$54,990.00
Maritime Industry School Pathways	\$4,875.00		\$4,875.00
Graduate Teacher Induction Prog & Graduate Curriculum Materials	\$1,243.14		\$1,243.14
Graduate Teacher Induction Prog & Graduate Curriculum Materials	\$2,486.28		\$2,486.28
Secondary Assistance Scheme - Clothing Allowance	\$575.00		\$575.00
Secondary Assistance Scheme - Education Prog Allowance	\$2,350.00		\$2,350.00
DTWD Career Taster Program funding	\$4,000.00		\$4,000.00
Commonwealth Grants	\$54,033.40		\$54,033.40
Pre-Service Teacher Fixed Term Pool	\$6,153.52		\$6,153.52
Graduate Teacher Induction Prog & Graduate Curriculum Materials	\$7,458.84	\$274.31	\$7,733.15
Secondary Assistance Scheme - Clothing Allowance	\$115.00		\$115.00
Secondary Assistance Scheme - Education Program Allowance	\$235.00		\$235.00
Graduate Teacher Induction Prog & Graduate Curriculum Materials	\$7,458.84	\$274.31	\$7,733.15
In School State Funded Chaplaincy Program	\$1,465.92		\$1,465.92
In School State Funded Chaplaincy Program	\$1,465.92		\$1,465.92
In School State Funded Chaplaincy Program	\$477.00		\$477.00
Pre-Service Teacher Fixed Term Pool	\$3,107.84		\$3,107.84
Pre-Service Teacher Fixed Term Pool	\$3,107.84		\$3,107.84
Vocational Education and Training Teachers Professional Learning	\$3,107.85	\$2,654.18	\$5,762.03
Graduate Teacher Induction Prog & Graduate Curriculum Materials	\$2,486.28	\$124.31	\$2,610.59
Graduate Teacher Induction Prog & Graduate Curriculum Materials	\$2,486.28		\$2,486.28
	\$1,513,698.19	\$341,760.09	\$1,855,458.28

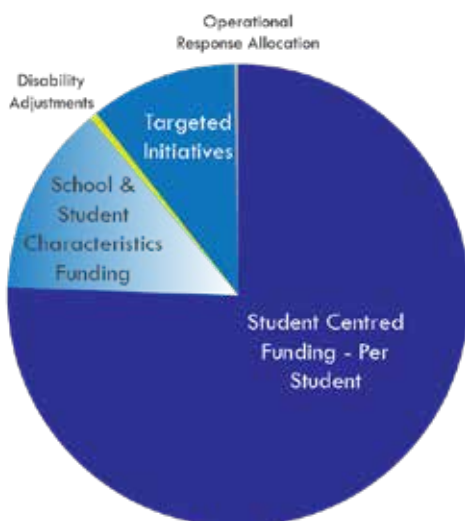
Financial Summary

as at 31 December 2023

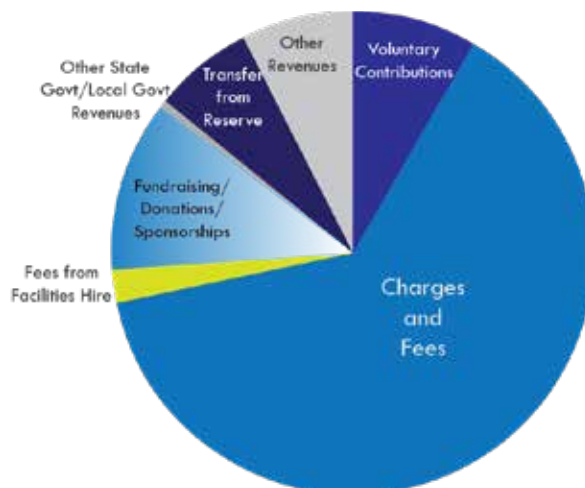
REVENUE - Cash and Salary Allocation

	Budget	Actual
CARRY FORWARD (Cash)	\$498,158	\$498,158
CARRY FORWARD (Salary)	\$411,870	\$411,870
Student Centred Funding		
Per Student	\$13,515,599	\$13,515,599
School and Student Characteristics	\$2,352,350	\$2,352,350
Disability Adjustments	\$84,837	\$84,837
Targeted Initiatives	1,855,458	\$1,855,458
Operational Response Allocation	\$24,653	\$24,653
TOTAL	\$17,832,897	\$17,832,897
Transfers and Adjustments		
Regional Allocation	\$18,994	\$18,994
School Transfers - Salary	(\$957,335)	(\$957,335)
School Transfers - Cash	\$955,632	\$955,632
Department Adjustments	(\$79,916)	(\$79,916)
TOTAL	(\$62,625)	(\$62,625)
Locally Raised Funds (Revenue)		
Voluntary Contributions	\$80,000	\$80,803
Charges and Fees	\$590,171	\$689,563
Fees from Facilities Hire	\$22,122	\$23,709
Fundraising/Donations/Sponsorships	\$106,219	\$86,119
Other State Govt/Local Govt Revenues	\$3,250	\$5,000
Other Revenues	\$62,506	\$87,751
Transfer from Reserve or DGR	\$69,544	\$69,544
TOTAL	\$933,813	\$1,042,489
Total Funds	\$19,614,112	\$19,722,789

REVENUE - Salary Allocation



REVENUE - Locally Raised Funds



Financial Summary

as at 31 December 2023

EXPENDITURE - Cash and Salary Allocation

Salaries

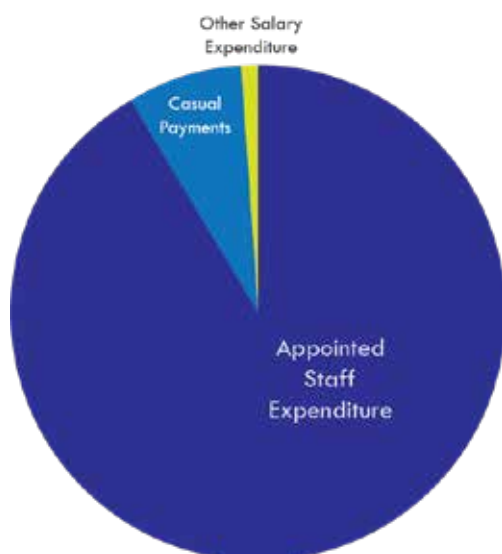
	Budget	Actual
Appointed Staff	\$15,166,768	\$15,166,768
New Appointments	\$0	\$0
Casual Payments	\$1,283,147	\$1,283,147
Other Salary Expenditure	\$145,085	\$145,085
TOTAL	\$16,595,000	\$16,595,000

Goods and Services (Cash Expenditure)

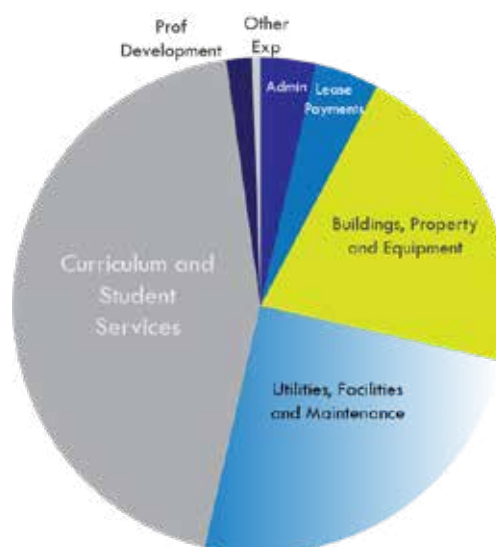
Administration	\$94,174	\$98,460
Lease Payments	\$106,000	\$102,621
Utilities, Facilities and Maintenance	\$524,056	\$506,925
Buildings, Property and Equipment	\$630,718	\$686,155
Curriculum and Student Services	\$1,105,917	\$1,226,638
Professional Development	\$42,976	\$66,120
Other Expenditure	\$10,500	\$30,934
Payment to CO, Regional Office and Other Schools	\$0	\$900
TOTAL	\$2,514,341	\$2,718,753

Total Funds	\$19,614,112	\$19,722,789
--------------------	---------------------	---------------------

EXPENDITURE - Salary Allocation



EXPENDITURE - Goods & Services



Financial Summary

as at 31 December 2023

One Line Budget

Carry Forward (Cash)	\$498,158
Carry Forward (Salary)	\$411.870
Income - Total Funds	\$19,722,789
Expenditure - Total Funds	\$19,313,754
Variance	\$409,035

